

THE BACCARAT 5104

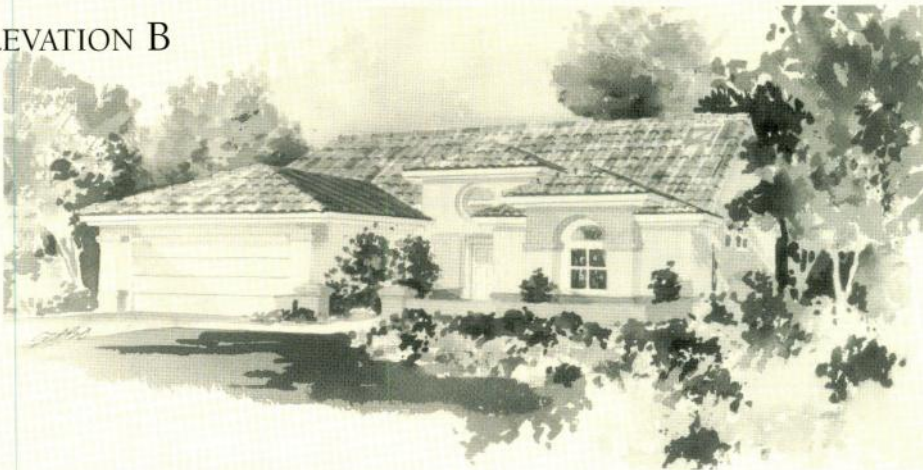
- 2 Bedrooms • 2 Bathrooms • Living Area
- Dining Area • Foyer • Covered Patio • Family Room
- Breakfast Nook • Kitchen • Utility Room
- 2 Car Garage • Approximately 1,822 liveable sq. ft.

Liveable s.f.	1,822
Garage	528
Covered Patio & Entry	215
Total Under Roof	2,565

ELEVATION A



ELEVATION B



ELEVATION C



Due to normal construction tolerances, room sizes may vary slightly from those shown on floor plans. Illustrations are artists' conceptions and are not intended to show specific detailing. This applies to all illustrated floor plans and elevations. Model representations and options subject to change without notice.